

Powder & Primers



Propellants for shot cartridge reloading are in three categories of vivacity. Degressive (fast burning), Neutral (medium burning), and Progressive (slow burning). They are classified by their make-up as single base, double base, and modified. Fast burn powders are for light loads up to 28 grams, medium 30 to 36g, and slow up to 50g. Slow powders are also common in all forms of non-toxic shot loads.

New powders such as Alliant 356, & T.E.O. are now available blended and balanced for use with non-toxic types of shot, particularly Steel shot. These are modified to give low breech pressures and high velocities. Some concern exists because they don't burn clean. The reason for this is due to the chemical make up within the powder. However, the results obtained are astounding and beyond the ability of other types of powder. So forget the residual burn element and buy a cleaning rod. A clean barrel has never killed anything yet, but an efficient shot load has.

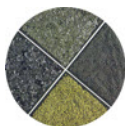
Never use a fast burning powder with a heavy load, unless you have a need to prove to yourself that St. Peter does exist and, that there are other behind his gates that are as daft as you. Remember, that resistance contained within a cartridge created by a fast burning propellant behind a heavy shot load, a tight wad fit and crimp, will make a propellant convert its heat to gas more efficiently. This will cause a high breech pressure and slow velocity, so never guess at what the burn speed of a powder is, always seek advise.

	Make	Price	Equivalent per lb.
POW20	1kg UEE CSBO Container	£46.00	£20.87
POW24	1kg B&P M92S Container	£46.00	£20.87
POW5	1kg Vectan A1 Container	£46.00	£20.87
POW6	1kg Vectan AS Container	£46.00	£20.87
POW8	1kg Vectan AO Container	£50.00	£22.69
POW10	1/2 kg Vectan SP3 Tub	£29.00	£26.31
POW14	1kg NobelSport GM3 Cont.	£50.00	£22.69
POW16	1kg TECNA-n Container	£50.00	£22.69
POW29	1lbs Blue Dot	£36.00	
POW30	1lbs Red Dot	£36.00	
POW£!	1lbs Green Dot	£36.00	

The equivalent price per lb is to give you an idea of what each powder costs compared to American imports.

Below is a general guide to the uses of the powders listed above. It is not sacrosanct but should be considered as important before use. Most of the powders can be used in other gauges, but must be used to a proofed formula. Be aware that some advice given by ignorance can be very dangerous.

Powder Type	Preferred Gauge	Shot Type	Max Weight In grams
Vectan AS	12 - 70mm	Lead	30
Vectan A1	12 - 70mm	Lead	36
Vectan SP3	.410 - 3"	Lead	19
UEE CSB5	12 - 70mm	Lead	32
UEE PSB2	12 - 70mm	Lead	42
UEE CSB0	10 - 3½"	Steel	46
TECNA-n	10 - 3½"	Steel	42
Alliant Steel	10/12 - 89mm	Steel	

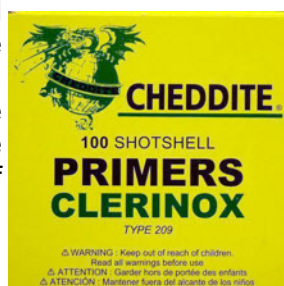


POWDERS CAN NOW BE SHIPPED VIA TNT

QUALITY PRIMERS

A shotgun primer should match the type of propellant being used. Primer are basically in three categories, Mild, Medium, or Hot. Generally, mild primers suit double base powders having a high level of nitroglycerine, medium go with most single base neutral powders, and hot are ideal for slow progressive powders. This however is only a rule of thumb, because as new modified powders become available, they are more susceptible to pressure change often caused by the flash temperature of the primer.

Cheddite Clerinox	CX2000	£4.65/100
Cheddite Clerinox	CX2000	£43.00/1000
Cheddite Clerinox	CX50	£4.65/100
Cheddite Clerinox	CX50	£43.00/1000
Federal Shotshell Primers No. 209A		£45.00/1000
Federal Shotshell Primers No. 209A		£4.85/1000



CX50



CX2000

Be warned.

Both CX50 and CX2000 now have **RED** tips. All new boxes of the CX2000 & CX50 have the word Clerinox shown, and on the back of each cardboard yellow 100 sleeve is printed either CX50 or CX2000 to indicate which primer the sleeve contains.

PRIMERS CAN NOW BE SHIPPED VIA TNT